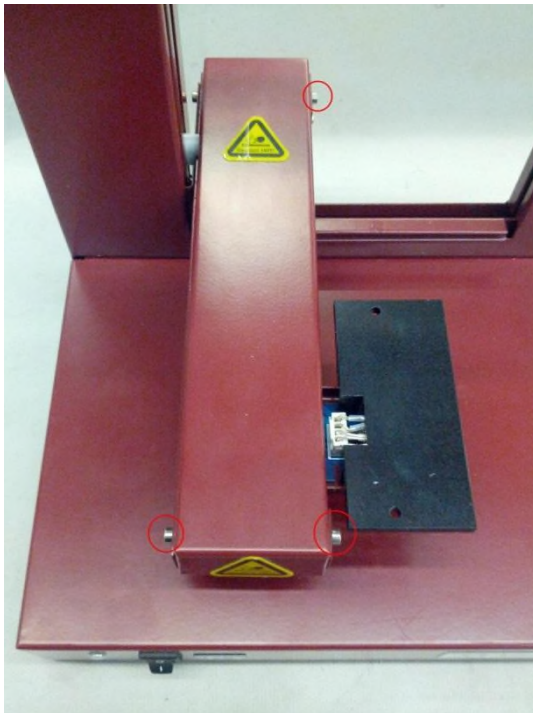


Platform Heater Replacement Guide (v3)

1. First, lay the unit on its side on a soft cloth to allow easier removal of the platform (Be careful with the extruder head, it will slide around). You will want to remove the 2 screws circled below to remove the plate. Once you've removed the plate, set the unit right-side up again.



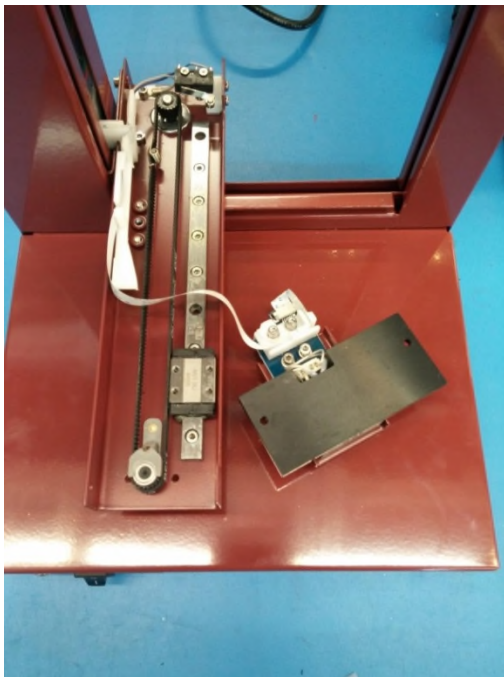
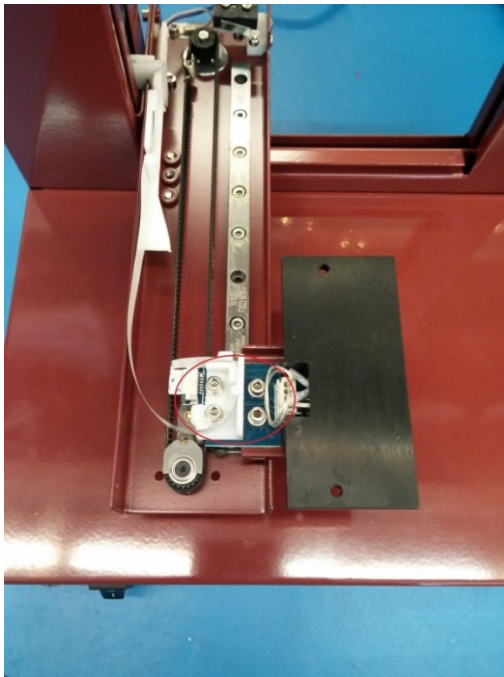
2. Next, you will want to remove the arm cover. Remove the 3 screws circled on the picture below; leave the one in the upper left side alone. After that remove the cover gently to prevent scratches.



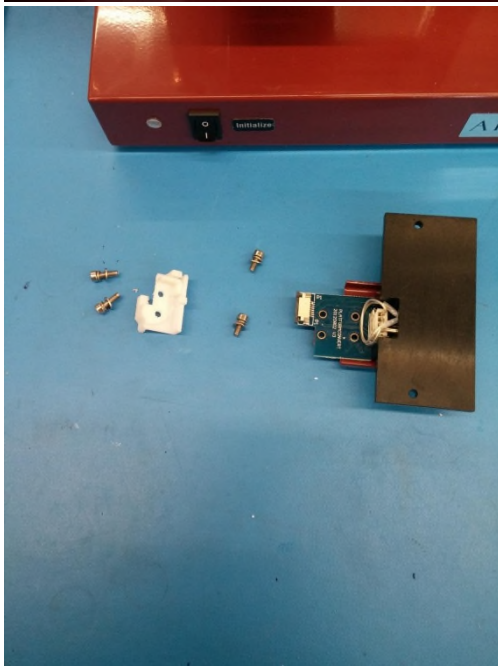
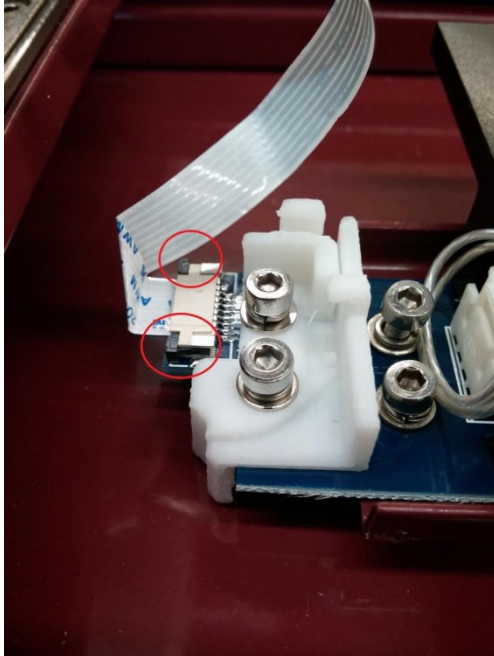
AFINIA

8150 Mallory Court, PO Box 846
Chanhassen, MN 55317
p 888.215.3966 f 952.556.1620
sales@afinia.com www.afinia.com

3. Once that's removed you will see the inside of the arm, move the platform heater all the way to the front of the machine. Then you will want to remove the 4 screws circled in the first picture below, the ones attached to the movable platform heater board. Careful as once these 4 screws are removed the heater block will be free and might fall down. Keep track of where the screws go as the two to the Left are longer than the two on the Right. It should look like the 2nd picture once removed.



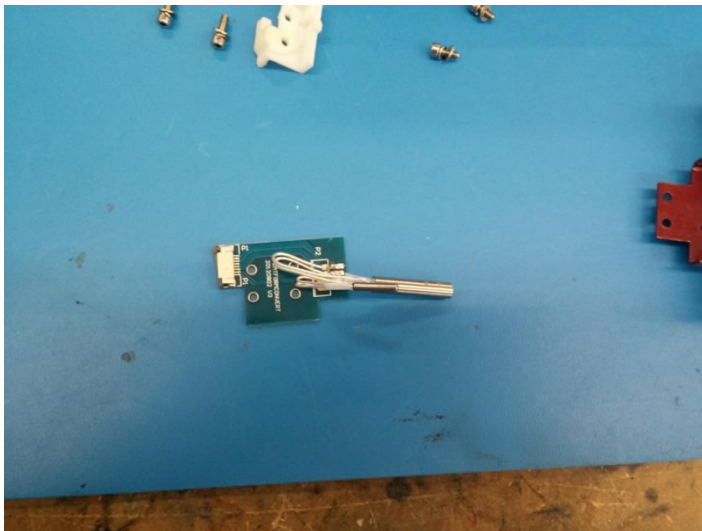
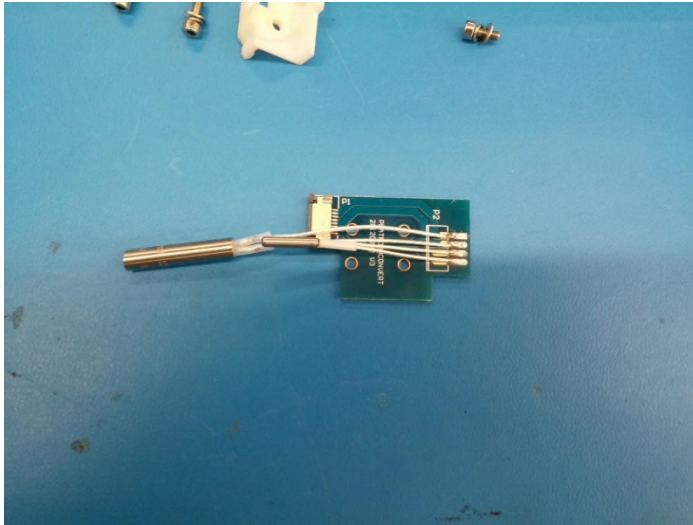
4. Once that's removed, you will need to unplug the white ribbon cable to the heater board. To do this you will need to gently pull on the 2 nubs circled in the first picture below. Pull them out gently and slide the ribbon cable out, it shouldn't require effort to remove. Once that is done, remove the board from the heater block like in the 2nd picture below.



AFINIA

8150 Mallory Court, PO Box 846
Chanhausen, MN 55317
p 888.215.3966 f 952.556.1620
sales@afinia.com www.afinia.com

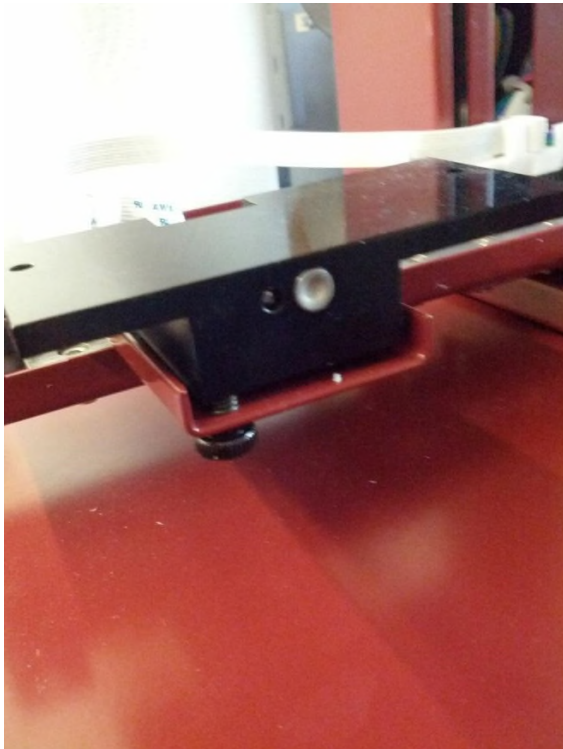
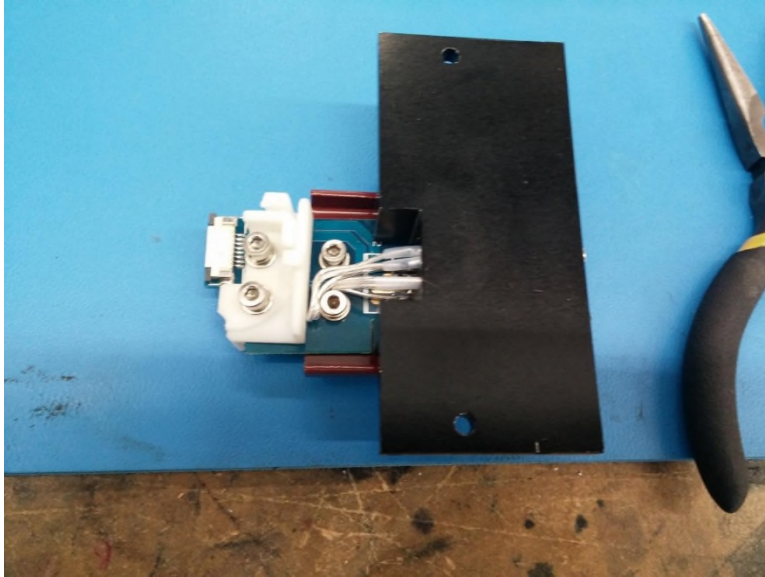
5. Take new Platform Heater you have (Should look like the one pictured below) and bend the heater and thermoresistor forward. Once that is done it should look like the second picture below.



AFINIA

8150 Mallory Court, PO Box 846
Chanhassen, MN 55317
p 888.215.3966 f 952.556.1620
sales@afinia.com www.afinia.com

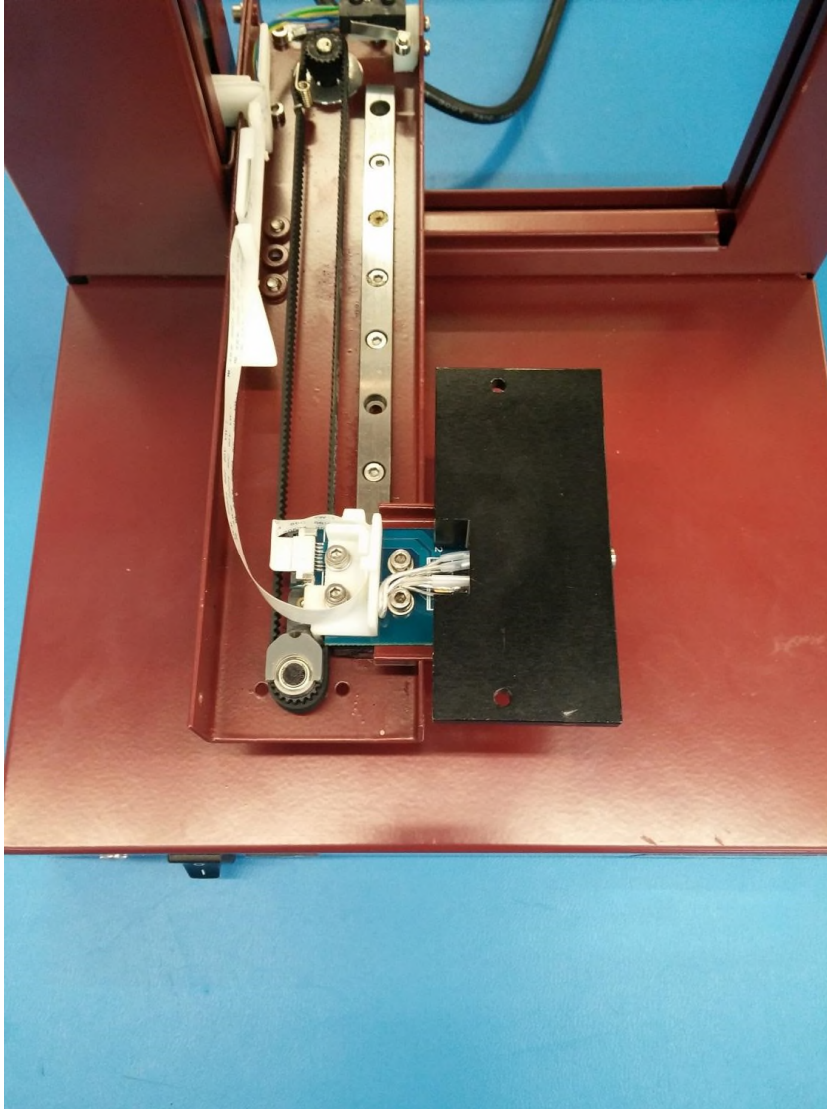
6. Insert the new heating element into the heater block and put the screws in. Don't be afraid to bend the wires a little so the wiring fits in properly within the small square cutout on the heating block. It should look like the picture below once done. Also, make sure that the heating element doesn't extend out the other side of the block.



AFINIA

8150 Mallory Court, PO Box 846
Chanhassen, MN 55317
p 888.215.3966 f 952.556.1620
sales@afinia.com www.afinia.com

7. After the heating plate is installed, start to reassemble the arm. Make sure when the white plastic piece (colors may vary) is reattached that the platform heater arm is on the opposite end of the spring tensioner. Reverse steps 3 and 4, It should look similar to the picture shown below.



8. Once that is properly assembled, replace the arm cover and the platform plate back on the unit.